



# **Transportation Project List Development**

**Land Use and Natural Resources Committee**

**August 1, 2024**

---

# AGENDA

The Ask

Where We Have Been

Where We Are Going

How We Are Getting There

Questions/Discussion

---

# Questions to Consider

- Do you have any questions or clarifications related to how we are developing the transportation project list?
- Are there missing questions that would help weigh a project's alignment with the Triple Bottom Line?



---

# WHERE WE HAVE BEEN



---

# Process and Engagement to Date

Adoption of the Triple Bottom Line Policy Framework

Adoption of Regional Growth Forecast

Call for Transportation Projects and Local Agency Interviews

Public Outreach and Engagement

Development and Evaluation of Land Use Assumptions

Transportation Project Sponsor Engagement (Phase 1)

---

# WHERE WE ARE GOING







# BLUEPRINT

## Land use and Transportation decisions and milestones schedule

2024

BOARD



**Inputs into the Draft Scenario**  
Principles and themes from public engagement AND regional housing demand and preferences analysis



**Financial Constraints of the Plan**



**Option 3: Complete Communities**  
Draft land use scenario with transportation and GHG performance implications



**Adopt Land Use Scenario**



**Adopt Final Scenario**  
Adopt combined final land use scenario and transportation project list

2024

JAN

FEB

MAR

APR

MAY

JUN

JUL

AUG

SEP

OCT

NOV

DEC

STAFF

Land Use Assumptions  
Staff Engagement

Transportation Project Sponsor Engagement  
(Phase 1)

Land Use Policy Development

Transportation Project Sponsor Engagement  
(Phase 2)

Transportation Policy Development

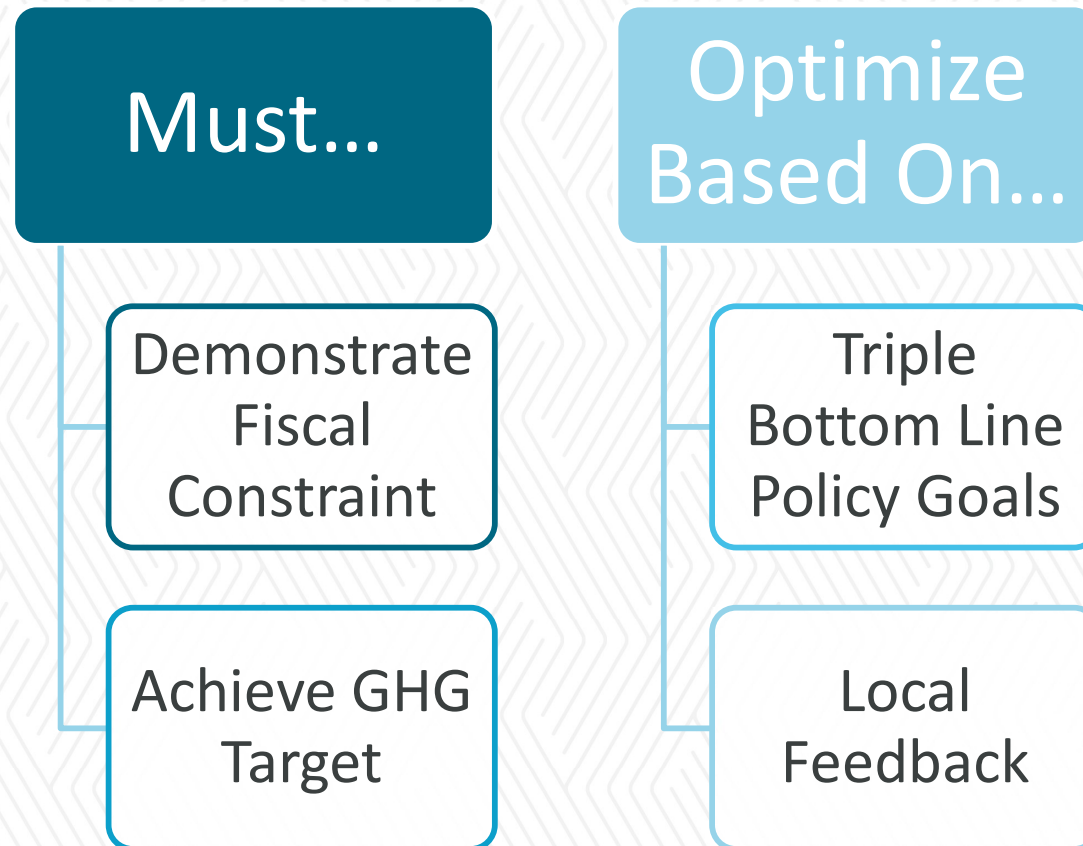
---

# HOW WE ARE GETTING THERE





# Approach for Transportation Project List



Must...

---

# DEMONSTRATE FISCAL CONSTRAINT



---

# What is fiscal constraint?

- Summary of cost to implement transportation strategy
- Projection of “reasonably available” revenues
- Identification of potential funding shortfalls
- Identification of strategies for new revenues



---

# Adopted Plan vs 2025 Blueprint

Major Project Categories	Total Budget in Billions	
	Adopted 2020 MTP/SCS	Preliminary 2025 Blueprint
Maintenance and Rehabilitation	\$12.6	\$13-14
Road and Highway Capacity	\$6.8	\$7-8
Transit	\$10.1	\$11-12
Bicycle and Pedestrian	\$2.5	\$2-3
Programs, Safety, System Management, and Operations	\$3.1	\$3-4

---

# Adopted Plan vs Nominations

Major Project Categories	Total in Billions		
	Adopted 2020 MTP/SCS Budget	Preliminary 2025 Blueprint Budget	Initial Project Nominations
Road and Highway Capacity	\$6.8	\$7-8	\$13-14

Must...

---

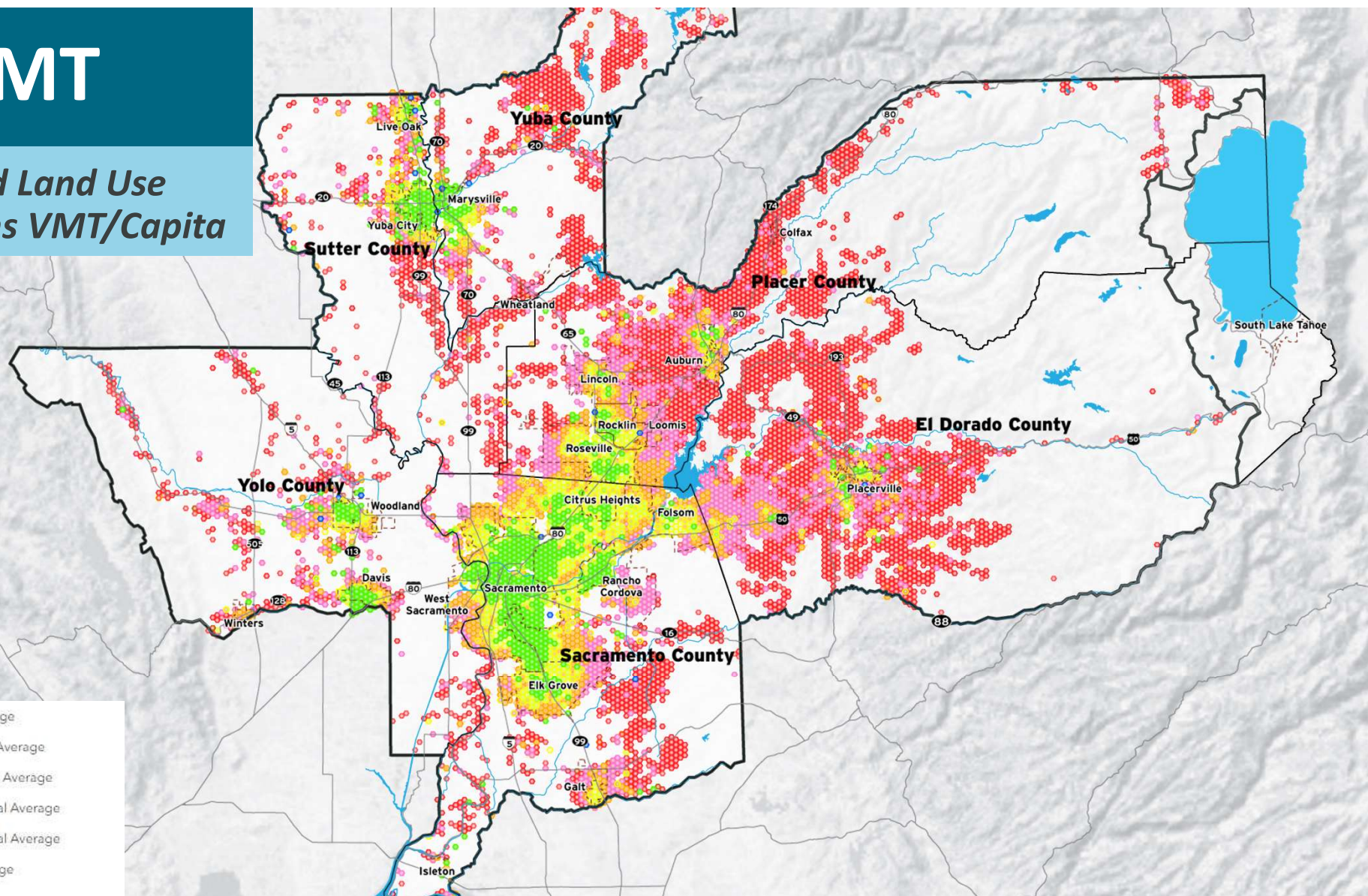
**ACHIEVE THE GHG TARGET**



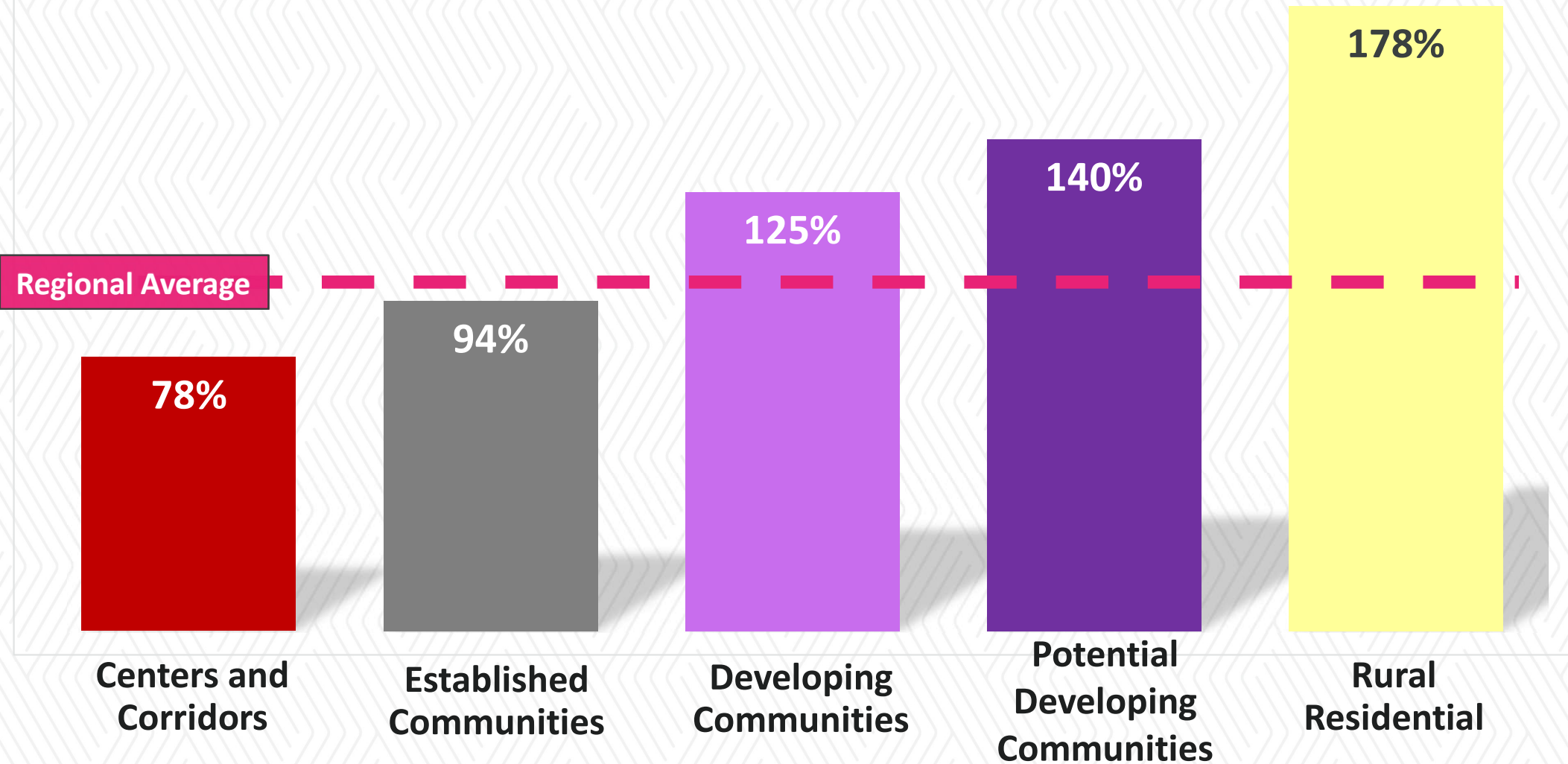


# VMT

## Adopted Land Use Assumptions VMT/Capita



# 2035 VMT/Capita in Discussion Scenario





Optimize based on...

---

# LOCAL FEEDBACK





# Transportation Project Sponsor Feedback

Call for Transportation Projects and Local Agency Interviews (2022)



Transportation Project Sponsor Engagement - Phase 1 (May 2024)



Transportation Project Sponsor Engagement - Phase 2 (September 2024)



Adoption of Transportation Project List (November 2024)

Optimize based on...

---

# TRIPLE BOTTOM LINE



# Triple Bottom Line

- Equity
- Economy
- Environment

Attachment B

The 2024 Blueprint is the Greater Sacramento region's long-range transportation and land use plan that will outline a collective vision, supported by goals, policies, and strategies, for a thriving, inclusive future with a strong economy, healthy environment, and mobility options for all residents. To ensure a strong foundation on which to build, the plan will be guided by three strategic goals centered around Equity, Economy, and Environment, or the three 'E's'. This Triple Bottom Line policy framework will shape the analysis, board discussions, and recommendations throughout the development of Blueprint. Below are the goal statements that define the three E's in the Triple Bottom Line framework:

**BLUEPRINT**  
METROPOLITAN TRANSPORTATION PLAN  
SUSTAINABLE COMMUNITIES STRATEGY

**Advancing the Triple Bottom Line through the Regional Land Use and Transportation Plan**

**Equity**  
A just and inclusive region where government makes investments for and with historically marginalized communities so race can no longer be used to predict health or economic outcomes, and outcomes for all groups are improved.

**Economy**  
A diversified regional economy in which all people have access to resources that give them the opportunity to realize their full potential. This future economy will also capitalize on key economic clusters where the region can achieve a competitive edge over our peers across the country, including agriculture and food, health sciences, and innovative mobility.

**Environment**  
A safe and resilient region for all residents, where natural resources and air quality are sustainably managed so people can thrive here for generations.

**SACOG**

**e<sup>3</sup>**



# Equity



Triple Bottom Line Policy Priorities	Does the Project...
Access from under-resourced communities to essential destinations	<ul style="list-style-type: none"><li>• Provide Transit Access</li><li>• Serve Job Centers</li><li>• Further a Local Priority</li></ul>
Transportation investments that better connect the region's workforce, in particular lower income residents, to jobs and opportunities.	
Proactive and genuine approach to engage representatives of Black, Indigenous, Asian, Pacific Islander, Hispanic/Latino, and other communities of color along with rural, urban, and under-resourced communities	

# Economy



Triple Bottom Line Policy Priorities	Does the Project...
Advance a fix-it-first approach to preserve and better maintain our transportation system in a state of good repair	<ul style="list-style-type: none"><li>• Provide Congestion Relief</li><li>• Serve Job Centers</li><li>• Serve Existing Land Uses</li><li>• Serve Land Use Growth</li><li>• Further a Local Priority</li></ul>
Identify and prioritize transportation investments that create or improve access to jobs, job centers, and economic development opportunities	
Prioritize infrastructure investment strategies and growth patterns that support the region's key economic clusters	
Identify infrastructure and program investments that better connect the region's workforce	

# Environment



Triple Bottom Line Policy Priorities	Does the Project...
Prioritize investment in infrastructure and development that supports a more resilient region	<ul style="list-style-type: none"><li>• Increase VMT Efficiency</li><li>• Serve Existing Land Uses</li><li>• Serve Future Land Use Growth</li><li>• Further a Local Priority</li></ul>
Invest in transportation and development that can reduce or mitigate harmful tailpipe emissions and other automobile related pollutants	
Invest in transportation and development that can reduce GHG emissions in line with the regional GHG reduction target.	



---

# Questions/Discussion

- Do you have any questions or clarifications related to how we are developing the transportation project list?
- Are there missing questions that would help weigh a project's alignment with the Triple Bottom Line?